

INSTRUCTION MANUAL

CM16 300BOT



MAINTENANCE



Remove the magazine.



Return the hop up dial to normal position and insert the cleaning rod from the lead edge of the inner barrel.



Be aware to have the rod facing down and reaching to the end, and remove clogged pellets.

TROUBLE SHOOTING



Adjust screw when the gear noise becomes shrilly

The screw at bottom of the grip. Please use the screwdriver to adjust.



No operation

Check the wire set contact with motor.

FRONT SIGHT ADJUSTMENT



Front Sight - Flip up



Front Sight - Press the button and Fold down

RETRACTABLE STOCK



Press the stock release lever to unlock.



Adjust the position (6 position).

REAR SIGHT ADJUSTMENT



Rear Sight - Flip up



Windage knob (left / right adjustment)
Elevation knob (up / down adjustment)

PARTS LIST

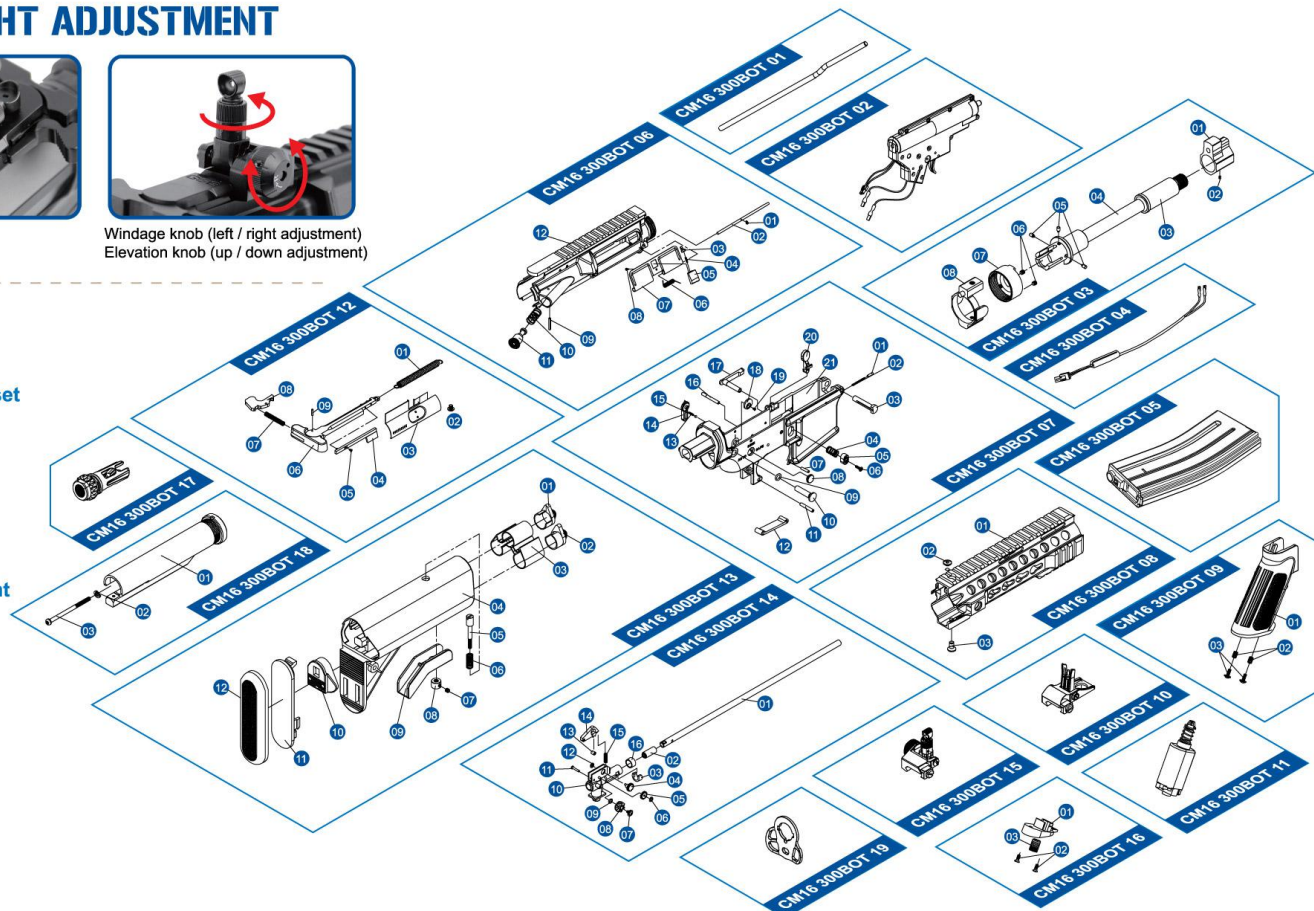
- CM16 300BOT 01 Dummy gas tube
- CM16 300BOT 02 Gear box
- CM16 300BOT 03 Barrel set
- CM16 300BOT 04 wire
- CM16 300BOT 05 Magazine
- CM16 300BOT 06 Upper Receiver Set
- CM16 300BOT 07 Lower Receiver Set
- CM16 300BOT 08 Rail system set
- CM16 300BOT 09 Grip
- CM16 300BOT 10 Front Sight

- CM16 300BOT 11 Motor
- CM16 300BOT 12 Charging handle set
- CM16 300BOT 13 Butt stock set
- CM16 300BOT 14 Inner barrel set
- CM16 300BOT 15 Rear Sight
- CM16 300BOT 16 Grip Bottom plate
- CM16 300BOT 17 Flash Hider
- CM16 300BOT 18 Stock Tube
- CM16 300BOT 19 Sling Swivel Mount

You may purchase all of the groups' parts from G&G support Dep.
E-Mail: support@guay2.com



G&G SINCE 1986
ARMAMENT
WWW.GUAY2.COM



Sales Dept. | sales@guay2.com , b2b@guay2.com
Technology Support Dept. | support@guay2.com
PR Dept. | pr@guay2.com

Chang Hua Headquarter
Tel : +886-4-798-9000 Fax : +886-4-798-9900
No.999, Zhonghua Rd. Shengang Township, Changhua County 50955, Taiwan (R.O.C.)

Taipei
Tel : +886-2-2692-2000 Fax : +886-2-2692-4000
11F-3, No.27, Lane 169, Kangning St. Shijr City, Taipei County 22180, Taiwan (R.O.C.)